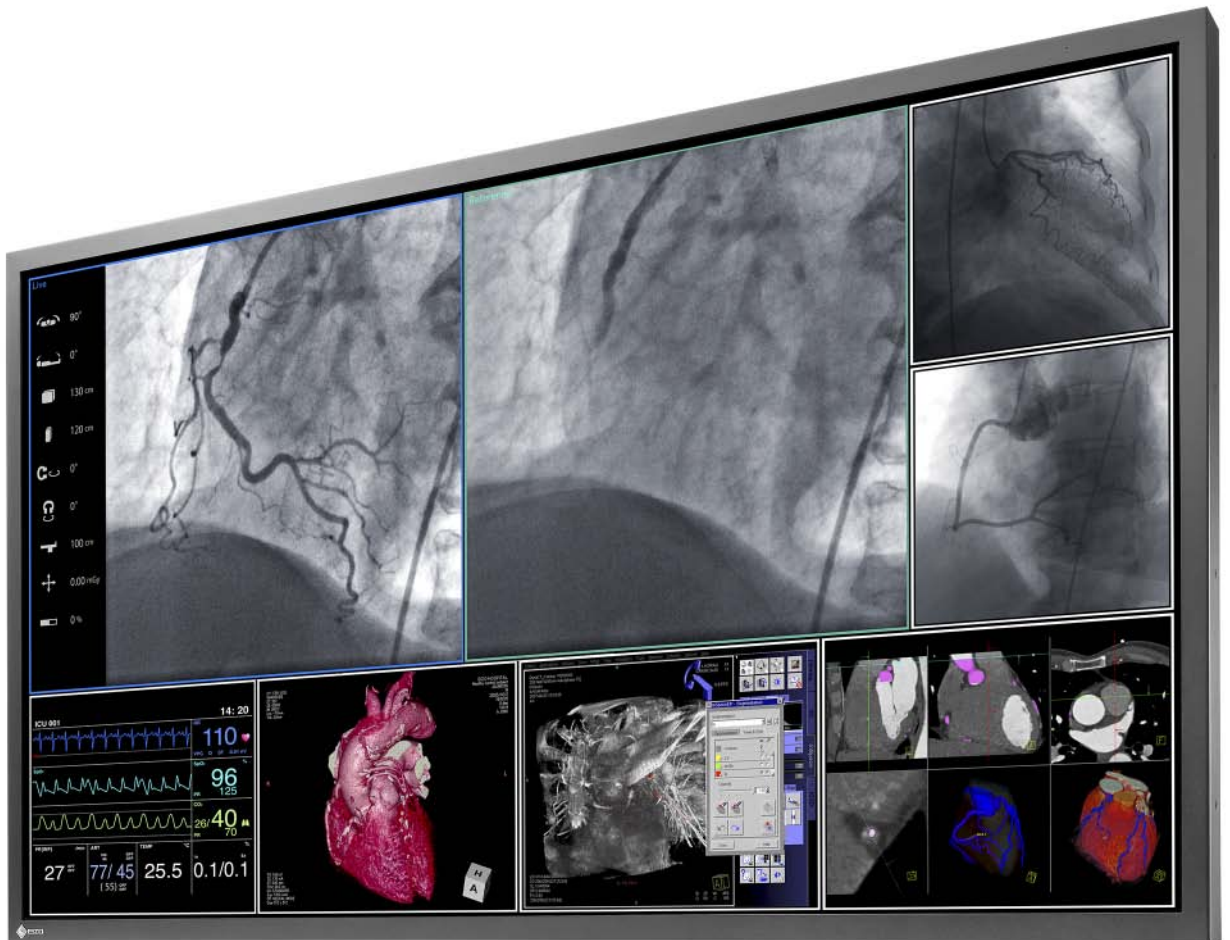
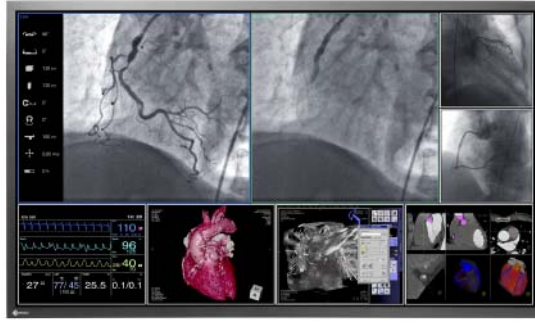




EIZO®

Surgical Monitor
RadiForce® LS580W





RadiForce® LS580W

58 inch viewing area enables a new dimension in medical imaging allowing high flexibility in arranging different screen layouts. Important pictures can be scaled to the desired size; less important information can be moved out of the focus. The LS580W supports life time luminance stability, gamma curves match DICOM/CIE recommendations. The display can be mounted to ceiling suspensions.

- Large viewing area, 58".
- Fully Automated Stability through the Integrated Stability System (ISS).
- DICOM/CIE compliant grayscale response built into the monitor.
- Integrated uniformity correction for homogenous luminance.
- Redundant power supplies for backlight and monitor electronic.
- 5 user defined 11-bit look-up tables adaptable to diverse reading and viewing environments.
- Gamma response calibrated during manufacturing to provide consistent image quality from one monitor to the next.

Cabinet Color	Black	Power Consumption	400 watts (maximum)
Panel	Color, TFT (MVA)	Power Save Mode	38 watts (DMPM mode)
Active Display Size (H x V)	1270 x 721 mm	Orientation	Landscape
Viewable Image Size	Diagonal: 1460 mm (57.5")	Mechanical Adaption	VESA 400 mm x 400 mm
Native Resolution	3840 x 2160	Degree of Protection	IP20
Display Colors	16.77 million from a palette of 8.5 billion colors	Net Weight	Without accessories: 47 ± 2 kg
Viewing Angles (H, V)	176°, 176° (typical) 160°, 160° (minimum at contrast ratio >=20)	Dimensions (W x H x D)	1319 x 776 x 146 mm
Brightness	700 cd/m ² (typical) 630 cd/m ² (minimum native white level)	Operating Temperature	5 to +40 °C (+41 to +104 °F)
Calibrated Brightness	350 cd/m ² including luminance uniformity correction	Storage Temperature	-20 to +55 °C (-4 to +131 °F)
Brightness Uniformity	DIN V 6868-57 / DIN V 6868-157 (in progress)	Operating Humidity	up to 80% r. h. non condensing
Color Tint	Native White (x/y): 0.280/0.290 ± 0.03	Storage Humidity	up to 80% r. h. non condensing
Contrast Ratio	2800:1 (minimum) 4000:1 (typical)	Operating Pressure	570–1050 hPs (427-795 mmHg) or up to 5000m (16400ft)
Response Time	9.5 ms (gray to gray, typical)	Storage Pressure	200–1050 hPs (144-795 mmHg) or up to 12000m (40000ft)
LUT	11 Bit	Certifications and Standards	CE (Medical Device Directive), IEC/EN60601-1, CAN/CSA C22.2 No. 60601-1-08, EN60601-1-2 Class B, UL60601-1, FCC-B, RoHS, WEEE, CCC (pending)
Sensor	Independent ISS (Integrated Stability System)	Supplied Accessories	AC power cord (us, eu), dual link signal cable (DVI-D ~ DVI-D) x 2, Utility Disk (Instruction for Use)
Scanning Frequency	59.7 - 60.5 Hz	Optional Accessories	Large Monitor Manager LMM56800, Large Monitor Manager LMM0802, DVI to HDMI cable, DVI to HDMI adapter, DVI Transmission Link TDL3600-QL (Quad Link), Protection Screen FPP5800, Stand FST5600
Dot Clock	257 MHz	Warranty	2 years, including luminance stability of 350 cd/m ² (± 10%) for 10,000 working hours
Signal Input Connectors	DVI-D 24 pin (Dual Link) x 2	Order Number	6GF6200-8AB01
Supported Signals	DVI Standard 1.0		
Data Interface	DDC, integrated in DVI		
Input Voltage	100 - 240 VAC, ± 10%		
Power Frequency	50 - 60 Hz, ± 5%		
Power Management	DVI DMPM		



EIZO GmbH

Siemensallee 84, 76187 Karlsruhe, Deutschland
Phone +49 7 21/2 03 21-0, Fax +49 7 21/2 03 21-474
www.eizo.com

All product names are trademarks or registered trademarks of their respective companies. EIZO, RadiForce, FlexScan, ScreenManager, RadiCS and RadiNET are registered trademarks of Eizo Corporation. Specifications are subject to change without notice.