

# STREAMLINED EPCR DATA FLOW



## MD116E Key Features

- Windows 10 pre-installed
- Intel® ELKhart Lake Pentium N6415 3.0 GHZ
- Sunlight readable 600 nits display
- Latex glove compatible PCAP Gorilla Glass touchscreen
- Dual hot-swappable batteries for non-stop operation
- Dual smart card reader
- Fanless, IP54 waterproof and dustproof



## Mobile Rescue Teams

- Clear and accurate takeover of operations from the dispatch center.
- Easy, fast and complete documentation of operations presented clearly and legibly.
- Simplified patient delivery to the admitting hospital and convenient reporting for the dispatch center.
- Standardization and hence, acceleration of processes and procedures for the ambulance crew.

## Emergency Medical Assistant

The Onyx MD116E EMS tablet is designed to help emergency service providers improve the patient handover process with a lower total cost of ownership by integrating an intuitive documentation tool for Electronic Patient Care Reporting (ePCR) and an automated wireless data exchange mechanism as a turnkey solution.



## Hospitals

- Faster, more efficient and better medical care for emergency patients with the appropriate team and medical devices
- Gaining comprehensive insights with the patient pre-registration option, for example: vital parameters, trends, rest-ECGs, photos, etc.
- Standardization of processes with customized solutions such as "Stroke Angel" & "Cardio Angel"
- Improved communication between hospital and ambulance crew

## Dispatch Centers

- Fast, secure and complete data communication between dispatch center & ambulance crew.
- Merging dispatch center data with mobile rescue teams.
- Easy documentation, billing & archiving of operations.
- Effortless data collection & communication, with a significant reduction of errors.

## Specifications

### Main Specifications

Processor	Intel® ELKhart Lake Pentium N6415 3.0 GHZ
System Memory	DDR4 SO-DIMM x1, 4 GB (Up to 16 GB)
OS Support	Microsoft® Windows 10, 11 IOT / Linux ubuntu 20.04 LTS
Storage	M.2 Interface x1, SATA/NVMe 64 GB (up to 1TB)
Wireless Communication	802.11 a/b/g/n /AC/AX + BT5.2 (Optional)
Camera	2 MP (Front) / 8 MP (Rear)
Touchscreen	Projected Capacitive Touchscreen w/Gorilla Glass
LTE+GPS	Sierra EM7421 x2 (Optional) [5G Sierra EM 9291 Supported]
Function Keys	x2 LED Indicators x2
Speaker	2W x2 Internal Mic x1
Security	Smart Card Reader x2 (Optional), RFID x1 (Optional)

### Display

Display Size	11.6" 16:9 Widescreen LED Panel
Resolution	FHD 1920 x 1080
Luminance (cd/m2)	300nits , 600nits

### I/O

USB	USB 3.0 (Type-A) x1, USB 3.0 (Type-C with External Display) x1
Ethernet	Gigabit LAN x1
Docking	Docking Connector x1

### Battery Pack

Battery Capacity	4545 mAh (32.72Wh) x2
Battery Run Time	Approx. 8 hrs

### Mechanical and Environmental

Operating Temperature	0°C ~ 32°C (14°F ~ 131°F)
Storage Temperature	-20°C ~ 60°C (-4°F ~ 140°F)
Dimensions	312 (W) x 239 (H) x 37 (D) mm
Net Weight	Approx. 1.45~1.8 kg
Certification	CE/FCC Class B, UL60601-1, EN60601-1, EN1789, Automotive Directive

## Contact Information

### Onyx Healthcare Inc.

4F., No. 135, Ln. 235, Baoqiao Rd., Xindian Dist., New Taipei City 231028, Taiwan (R.O.C.)  
Tel: 886-2-8919-2188  
Fax: 886-2-8919-1699  
E-mail: sales@onyx-healthcare.com

### Onyx Healthcare EUROPE B.V.

Primulalaan 42, 5582 GL, Waalre, The Netherlands  
Tel: +31-(0)499-745600  
E-mail: sales@onyx-healthcare.com

### Onyx Healthcare USA, Inc.

324 W. Blueridge Ave., Orange, CA 92865  
Tel: +1-714-792-0774  
Fax: +1-714-792-0481  
E-mail: sales@onyx-healthcare.com

# MOBILE MEDICAL ASSISTANT

## MD116E



World Leading  
12" Medical Tablet Designed  
for Multi-Care Flow



## Medical Field

Due to the aging global population, Onyx Healthcare is committed to design smart mobile assistive devices to aid elderly and disabled individuals revitalize their social lives, thereby fulfilling its corporate social responsibility. Therefore, Onyx Healthcare developed a series of mobile tablets, which not only feature robust exterior housing capable of preventing damage caused by frequent movements, but also have passed strict medical grade certifications, and are thus suitable for medical professionals as well as home patients. With the compact lightweight design, long battery life, bright display, and waterproof construction, the device is not limited to indoor use. Patients are free to go outdoors and make adjustments to their lives. In addition, the exclusive cradle design enables easy coupling and detachment of Onyx tablets on various wheelchairs, beds, and carts, allowing it to be easily transported.

## Telemedicine

The MD116E has dual LTE modules, providing powerful wireless communication with an ultra-high speed Gigabit Ethernet interface. The MD116E's high resolution (FHD 1920x1080) and high brightness (600 nits) display makes it easy for telemedicine applications.

## EKG

Using the MD116E with AI can interpret the electrocardiogram signal, and assesses the condition of the heart, providing accurate and efficient assistance for doctors. This artificial intelligence assists doctors in the diagnosis of the tumor, and can be a non-invasive screening to breast puncture and biopsy to determine the malignancy of the breast tumor.

## Dual LTE Modules

- Built-in dual LTE to ensure maximum bandwidth for a stable data connection and zero data loss.
- One module is configurable for 5G upgrade



## Inspired by Healthcare Professionals

### One-Handed Operation

The MD116E can be easily docked and released by one hand with our patented vehicle docking system. The tablet can be quickly and easily unlocked and removed from the dock by pressing the locking clamp, and carried to the scene.



### Easy-Grip Handle

The handle's ergonomic design makes the MD116E easy to hold while the elastomer coating prevents the tablet from slipping out of your hands.



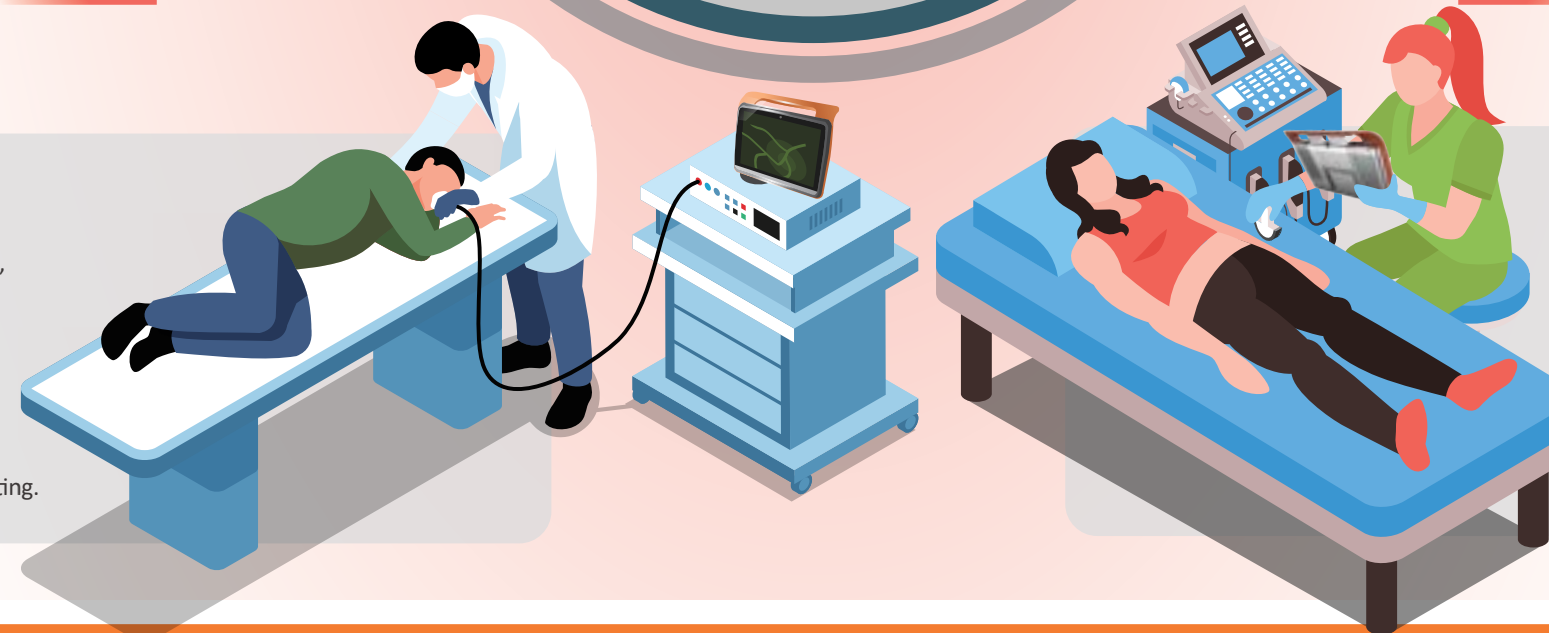
## Designed for Acute-Care

Dual Smart Card Readers free up Healthcare Professionals from frequently exchanging ID cards so they can focus more on acute patient care. In addition to automated patient vital sign data collection, the MD116E also integrates a high resolution camera for documenting wounds, and barcode scanning.



## Endoscopy

Working with medical equipment manufacturers, Onyx has integrated custom medical imaging modules in the MD116E for disposable bronchial endoscopy applications. Combining the Intel® AI Accelerator/Movidius™ Myriad™ X VPU with AI-like neural network deep learning, the MD116E is capable of artificial intelligence medical image recognition and inference computing.



## Ultrasound

The MD116E can be linked to the best high performance and reliable ultrasound device. This artificial intelligence assists doctors in the diagnosis of the tumor, and can be a non-invasive screening to breast puncture and biopsy to determine the malignancy of the breast tumor.



## Superior Wireless Connectivity



### Proprietary Antenna Design

RF antennas are integrated into the handle to overcome shielding issues from the magnesium alloy chassis and RF performance has been enhanced.

## USB-C Data & Output Display Function

- USB 3.0 Type-C connection for high data rate transmission.
- Output display to external monitor via USB-C connector.



## Dual Hot-Swappable Batteries & Spare Battery Packs



- Dual hot-swappable batteries are compact, lightweight and easy to change.
- Batteries can be charged in as quick as two hours.
- LED indicators show the exact power level on each battery pack in real time.
- Two spare battery packs are included in the vehicle dock and are always fully charged for quick and easy swapping at any time.